



09 | 2016

TIM BOWEN  
ANTIQUES



**I Oak linen press**  
**Cwpwrdd prés derw**

£4650

Wonderful Welsh oak linen press, which is superbly made with some unusual detail, such as the mahogany and bog oak banded frieze that is inlaid with bone initials AJ and the date 1840. Other noteworthy details are the mitre-jointed door frame, turned quarter columns, the interior wooden door catch and the oak rollers which are fitted to the base floor to assist with the use of the bottom drawer.

*Possibly made as a marriage gift for Ann Jones of Rhydlewis in Cardiganshire.*

*Cardiganshire dated 1840.*

*Illustrated on page 283 in vol II of "Welsh Furniture 1250 – 1950, A Cultural History of Craftsmanship & Design" by R.Bebb, Saer Books 2007*

55" w x 21" d x 81" h

139.6cm w x 53.3cm d x 205.7cm h



2 Primitive stick chair  
Cadair ffyn gyntefig

£5950

A rare primitive hoop-back stick chair of wonderful form, with a very unusual shaped cresting rail. Made from Ash and Elm and retaining much of the original paint.

*Circa 1780*

*Provenance: This chair has been in the same Carmarthenshire family since at least the 1940's which suggests a possible Welsh origin, although in "The English Windsor Chair" by Thomas Crispin (Alan Sutton publishing 1992) a similar style chair with comparable arm supports has a "West Country" style attribution.*

26" w x 15" d x 41 ¼" h

66cm w x 38.1cm d x 104.9cm h

3 Welsh dresser  
Dresel Gymreig

£9850

An excellent early oak dresser, with a canopy rack which has turned pendants and boldly shaped sides. The panelled base has two drawers and two cupboards.

It is made from well figured Welsh oak throughout and has an excellent colour.

*North Wales, possibly Snowdonia, circa 1700*

56" w x 23" d x 80 ½" h

142.2cm w x 58.4cm d x 204.4cm h

*Private collection North Wales.*





4 Small corner cupboard  
Cwpwrdd cornel bychan | £1350

A Welsh corner cupboard, which is made from oak with a cross banded mahogany frieze above both the single astragal glazed door and the lower panelled door.

*Carmarthenshire circa 1800*

37" w x 19½" d x 77½" h  
94cm w x 49.5cm d x 196.8cm h



5 Welsh chest of drawers  
Cist ddroriau Gymreig | £3950

A rare Welsh oak chest of drawers, with a very unusual sloping top above four cock-beaded drawers and raised on square back and front cabriole legs. Wonderful colour and patina.

*Montgomeryshire circa 1750*

*Illustrated on page 63 in vol II of "Welsh Furniture 1250 – 1950, A Cultural History of Craftsmanship & Design" by R.Bebb, Saer Books 2007.*

31¾" w x 21½" d x 32" h  
80.6cm w x 54.6cm d x 81.3cm h



6 Small oak chest of drawers | £4650  
Cist ddroriau fechan

This is a very small and wonderfully proportioned oak chest of drawers in excellent condition. The top and drawers are cross-banded with walnut and with original brass handles and escutcheons.

*English/Welsh circa 1740*

30" w x 17¼" d x 29" h

76.2cm w x 43.7cm d x 73.6cm h



7 Oak side table | £1250  
Bwrdd derw

An unusually tall side table with three drawers above a shaped frieze.

*Welsh circa 1780*

32" w x 19" d x 31¾" h

81.3cm w x 48.2cm d x 80.6cm h



opposite page

8 **Welsh folk art straw picture** | £1650  
**Llun o waith gwellt**

Wonderful straw-work picture depicting St Catherine's Church and the National School, Abergele Road, Old Colwyn, North Wales. Entitled Colwyn Church and School Room.

*Similar straw work pictures are known, and they may have been made by patients at the Glan-y-don hospital in Colwyn Bay, as a form of occupational therapy.*

*North Wales circa 1860*

*A straw-work picture is illustrated in *The Visual Culture of Wales: Industrial Society* by Peter Lord, University of Wales press 1998 and in *English Naive Painting 1750-1900*, by James Ayres, Thames and Hudson, London and N.Y. 1981, and straw pictures are held in the collection of the Welsh National History Museum, St Fagans, Cardiff.*

*24¼" w x 18¼" h including frame.  
62cm w x 46.4cm h*

9 **Angler's priest** | £275  
**Pastwn pysgotwr**

Beautifully turned from solid yew-wood.

*Circa 1880*

*8½" l x 1½" dia  
21.6cm l x 3.9cm dia*





10 Shoe Snuff box | £385

**Blwch snisin**

Larger than usually found and made from beautifully patinated walnut with brass studded decoration.

*Circa 1840*

5" w x 1½" d x 2" h

12.7cm w x 3.9cm d x 5.1cm h



11 Pair of carved slate shoes | £360

**Pâr o esgidiau llechen**

Miniature models of boots, shoes and similar pieces of folk art were carved by quarrymen of North Wales and most date from the late 19th century. Many were probably made to decorate their own homes and were given as gifts or entered into competition at local Eisteddfodau.

*North Wales circa 1880*

4" w x 1" d x 2½" h

10.2cm w x 2.5cm d x 6.4cm h



12 Small oak box | £1150

**Blwch derw bychan**

A small boarded box with delicately chip carved front.

*English circa 1680*

15" w x 11" d x 5" h

38.1cm w x 28cm d x 12.7cm h

13 **Miniature chest of drawers**  
**Cist ddroriau fechan**

£650

A very pretty miniature Welsh chest of drawers which is made from a variety of woods, including oak, pine, mahogany, bog-oak and sycamore, also with turned ebonised handles and bone escutcheons.

*Welsh circa 1890*

*10¾" w x 4½" d x 10" h*

*27.3cm w x 11.5cm d x 25.4cm h*



14 **Inlaid oak box**  
**Blwch gyda brithwaith derw**

£485

Small Welsh oak box which is inlaid & crossbanded with yew-wood and sycamore hearts & diamonds.

*Welsh circa 1880*

*7" w x 5½" d x 6" h*

*17.8cm w x 14cm d x 15.3cm h*





15 **Bread peel**  
**Rhawlech fara**

£320

A well patinated pine bread peel initialled  
"ED & F"

*Welsh 19th century*

9¾" w x 31" h

24.8cm w x 78.7cm h



16 **Dough boards**  
**Byrddau toes**

£260  
each

Two 19th century Welsh dough boards  
made from beautifully figured elm

20" h x 17½" w

50.8cm h x 44.5cm w



17 Tobacco sign  
Arwydd tybaco

£465

A double sided enamelled tin sign,  
advertising Ringers Shag tobacco.

*Early 20th century*

*Ringers were tobacco & snuff manufactures  
from Bristol.*

*20" w 14" h 2" d*

*50.8cm w x 35.6cm h x 5.1cm d*

18 Small Welsh oak linen press  
Cwprwdd prés bychan

£2600

Small linen presses and cupboards were  
often found throughout West Wales;  
this example is particularly small, it  
comes in two parts and has two gothic  
shaped panelled doors enclosing a  
cupboard with a single shelf, the base  
with five drawers.

*Cardiganshire/Cardiganshire circa 1820*

*53¼" w x 20½" d x 54¾" h*

*135.2cm w x 52cm d x 139cm h*

*(Later brass handles)*





19 **Welsh oak arm chair**  
**Cadair freichiau dderw** | £2750

It has a shaped and carved top rail, above a panelled back and ball-turned front legs and stretcher. With good untouched colour and patina.

*Welsh circa 1690*

22" w 20" d x 42" h

55.9cm w x 50.7cm d x 106.7cm h

*opposite page*

20 **Rolling pins**  
**Rholbrennau** | £260  
pair

Two turned and polished yew-wood rolling pins, possibly used for drying delicate pieces of washed lace rather than for pastry.

*Circa 1880*

8½" l x 1½" dia

21.6cm l x 3.9cm dia

*Further reading: Treen & Other turned woodware for Collectors by Jane Toller, published by David & Charles 1975*



21 **Knitting sheath and clew** | £850  
**Pren i ddal gweillen wau a phellen**

A wonderfully carved sycamore knitting sheath which is linked by a chain to a hook used to hold a ball of wool and known as a clew holder. Probably made as a love token, it is intricately carved from a single piece of wood and decorated with chip carving, pierced & carved hearts and balls in cage detail.

*Welsh circa 1820*

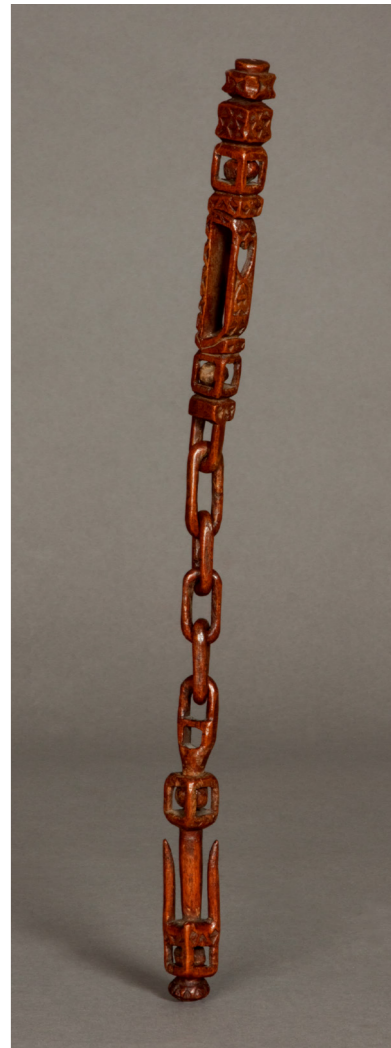
*(Some losses to the hooks)*

14¼" l x ½" w x ½" d

36.2cm l x 1.3cm w x 1.3cm d

*"The use of the stick "sheath" was to support a needle to work from during the process of knitting and for this purpose it had a hole in the end to receive the needle."*

*Guide to the collection of Welsh Bygones, Iorweth Peate – National Museum of Wales 1927*





22 Primitive cricket table  
Bwrdd criced cyntefig

£2250

A wonderful little table, which is made entirely from elm and with the top made from a single piece of beautifully figured timber.

*19" dia x 21½" h*  
*48.2cm dia 54.6cm h*

*West Country circa 1800*



Catalogue No.22  
Made in Wales

Further images of all items can be found at [timbownantiques.co.uk](http://timbownantiques.co.uk)

Photography by Kevin Thomas [kevinthomasphoto.co.uk](http://kevinthomasphoto.co.uk)  
Design and Print by Monddi [mondidi.co.uk](http://mondidi.co.uk)



LAPADA

THE ASSOCIATION OF  
ART & ANTIQUES DEALERS

**Tim Bowen Antiques**

Gallery Opposite Ivy House Ferryside Carmarthenshire SA17 5SS

t: +44 (0)1267 267 122 m: +44 (0)7967 728515

e: [info@timbowenantiques.co.uk](mailto:info@timbowenantiques.co.uk)

w: [www.timbowenantiques.co.uk](http://www.timbowenantiques.co.uk)

